

PEREDS

INDEPENDENT
PROPERTY CONSULTANTS
SINCE 1967

SOVEREIGN COURT, WRIGHTS LANE, W8

A well-appointed one-bedroom apartment with secure underground parking, situated on the fifth floor of a well-maintained portered building conveniently located for the excellent amenities of High Street Kensington and only a stones throw away from Equinox gym



£520pw furnished or unfurnished
double bedroom
west-facing reception room
private underground parking
24hr porterage
onsite gym
lift

Managed by Pereds
Available from 8th April 2022



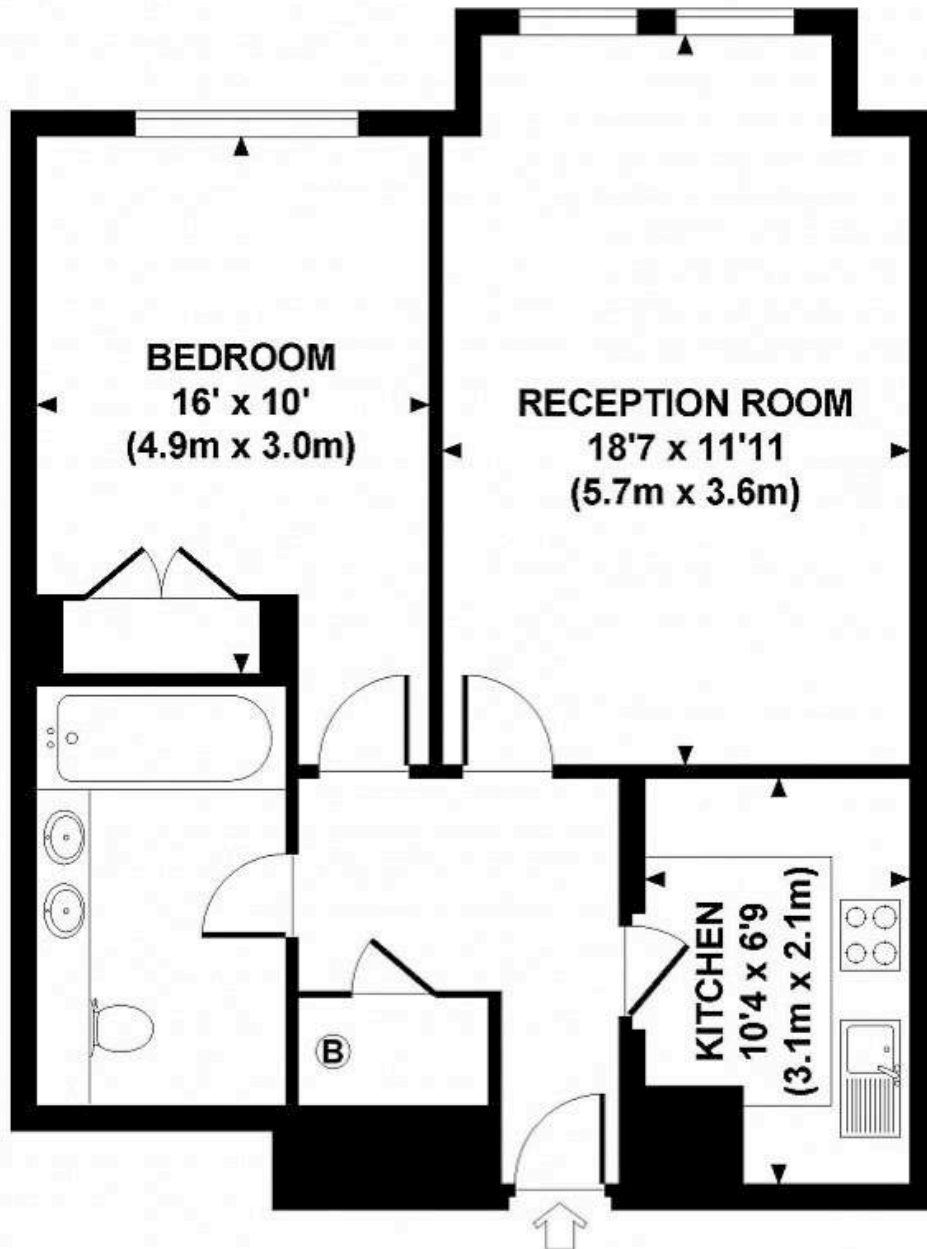
PEREDS



PEREDS

SOVEREIGN COURT, W8

Approx. gross internal area
613 Sq Ft. / 57 Sq M.



FIFTH FLOOR



All measurements are approximate and for illustration purposes
only as defined by the RICS Code of Measuring Practice © 2012
Dewling Jones Design www.dewlingjones.com 020 7610 9933

PEREDS

Score	Energy rating	Current	Potential
92+	A		
81-91	B	82 B	84 B
69-80	C		
55-68	D		
39-54	E		
21-38	F		
1-20	G		

Please be aware that descriptions of property are inevitably subjective. Those given here are intended to be fair and accurate, but they are prepared for guidance only and do not form a part of any offer or contract. No responsibility is taken for errors, omissions or mis-statements.

Areas, measurements or distances referred to are approximate only.

It should not be assumed that items shown in photographs would remain at the property.

Pereds makes no representations nor gives any warranty whatever either during negotiations, in particulars or elsewhere.