



25  
Ovington  
Square

KNIGHTSBRIDGE SW3



The principal floors of an elegant Grade II stucco-fronted terraced house overlooking truly gorgeous communal gardens  
 A triplex apartment of 3,286 sq ft on ground, first and lower ground floors with generous ceiling heights, with a south/west-facing terrace.

---

drawing room library/study  
 kitchen/dining room cloakroom  
 principal bedroom suite with balcony  
 2 further bedroom suites  
 south/west-facing terrace  
 storage vaults  
 right of access to Ovington Square Gardens

---

**Freehold**

The maisonette forming the top two floors is sold on a lease expiring in December 2201, its lessees contributing 34% of the building's maintenance costs

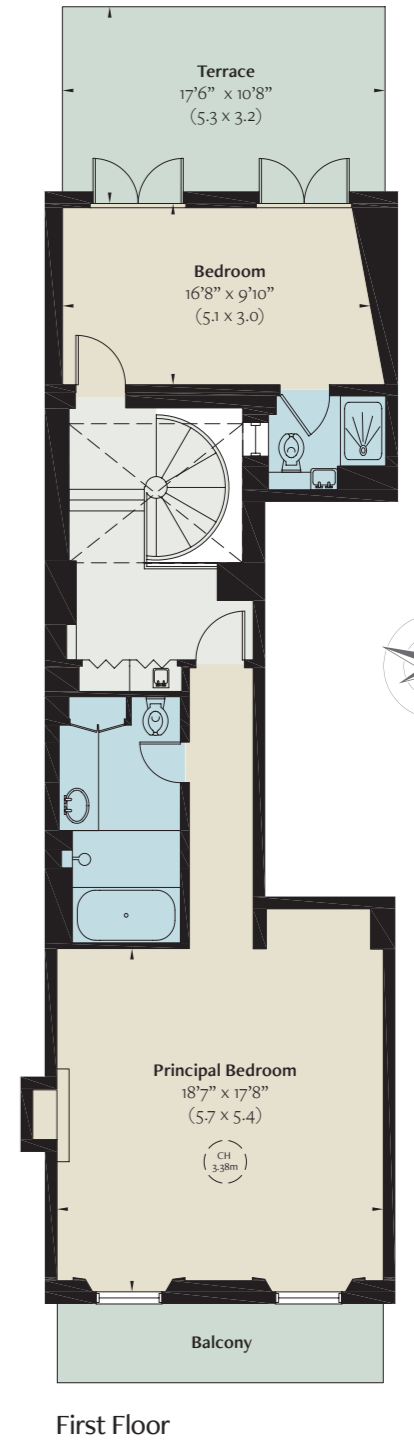
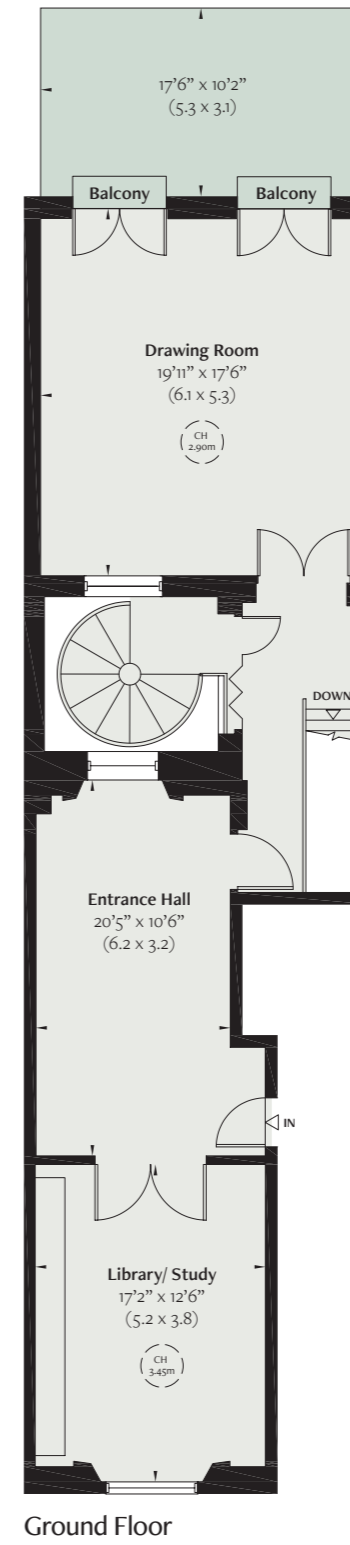
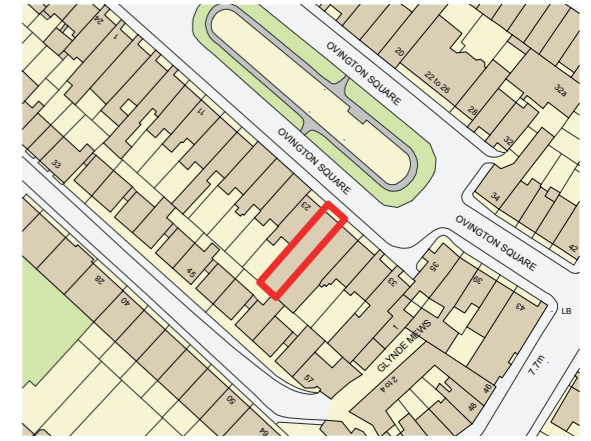
**Price on application**

The Royal Borough of Kensington & Chelsea





Approximate Gross Internal Area  
**3,346 sq ft / 311 sq m**  
 including vault  
**3,286 sq ft / 305 sq m**  
 excluding vault



**IMPORTANT NOTICE**  
 Please be aware that descriptions of property are inevitably subjective. Those given here are intended to be fair and accurate, but they are prepared for guidance only and do not form part of any offer or contract. No responsibility is taken for errors, omissions or mis-statements. Plans are for guidance only and must not be relied upon as statements of fact. Areas, measurements or distances referred to are approximate only. It should not be assumed that items shown in photographs will remain at the property. Pereds make no representations nor give any warranty whatever either during negotiations, in particulars, or elsewhere.



**RUSSELL  
SIMPSON**

5 Anderson Street, London SW3 3LU

**020-7225 0277**

[www.russellsimpson.co.uk](http://www.russellsimpson.co.uk)

**PEREDS**

INDEPENDENT  
PROPERTY CONSULTANTS

**020 7221 1404**

PORTLAND HOUSE PORTLAND ROAD  
HOLLAND PARK LONDON W11 4LA  
[PEREDS.COM](http://PEREDS.COM)