

Lambton Place

Notting Hill W11

“A perfect pied-à-terre”



A delightful first floor flat with wrap-around roof terrace, situated close to Westbourne Grove's and Notting Hill's finest bars, restaurants and shops.

PEREDS

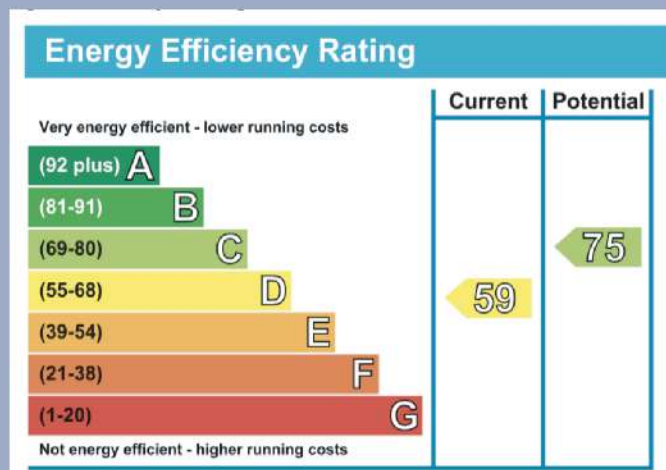
INDEPENDENT
PROPERTY CONSULTANTS
SINCE 1967





one double bedroom
 reception room bathroom/WC kitchen
 intruder alarm system
 roof terrace

available furnished/unfurnished at
 £595pw



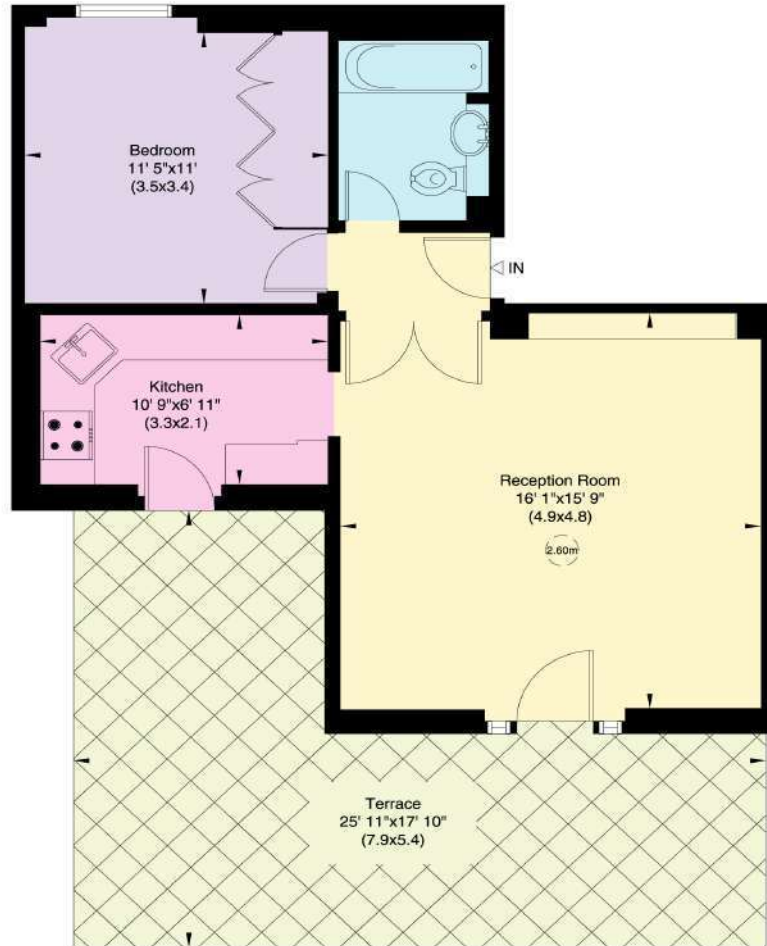
Lambton Place, W11

Gross internal area (approx.)
50 Sq m (537 Sq ft)

For identification only, Not to Scale



Floor Plan by **capital group** 020 8671 7722



First Floor

Not to scale, for guidance only and must not be relied upon as a statement of fact. All measurements and areas are approximate only (and have been prepared in accordance with the current edition of the RICS Code of Measuring Practice).

Please be aware that descriptions of property are inevitably subjective. Those given here are intended to be fair and accurate, but they are prepared for guidance only and do not form part of any offer or contract. No responsibility is taken for errors, omissions or mis-statements.

This document and the information contained must not be distributed without Pereds' express permission.

Areas, measurements or distances referred to are approximate only.

It should not be assumed that items shown in photographs will remain at the property. Pereds make no representations nor give any warranty whatever either during negotiations, in particulars, or elsewhere.