

Royal Crescent

W11



Top floor flat, 36 Royal Crescent is a newly refurbished one bedroomed apartment in a Grade II* listed elegant stucco-fronted crescent overlooking and with access to beautifully maintained communal gardens.

The flat has stripped pine floorboards in the hallway, bathroom and reception room/kitchen and newly laid sisal carpet in the bedroom. The reception room ceiling is dramatically vaulted into the roof space with soaring heights of up to 4m.

Royal Crescent is close to the wonderful selection of shops, restaurants, Central line tube station and coffee houses on Holland Park Avenue as well as the cornucopia of choices at the Westfield shopping centre. Both are less than 5 mins walk way.

summary of accomodation:

*living/dining/kitchen with vaulted ceiling
double bedroom
large bathroom
entrance hallway
attic storage
access to Royal Crescent communal gardens
Council tax band E*

£695 per week | unfurnished | available 1st October

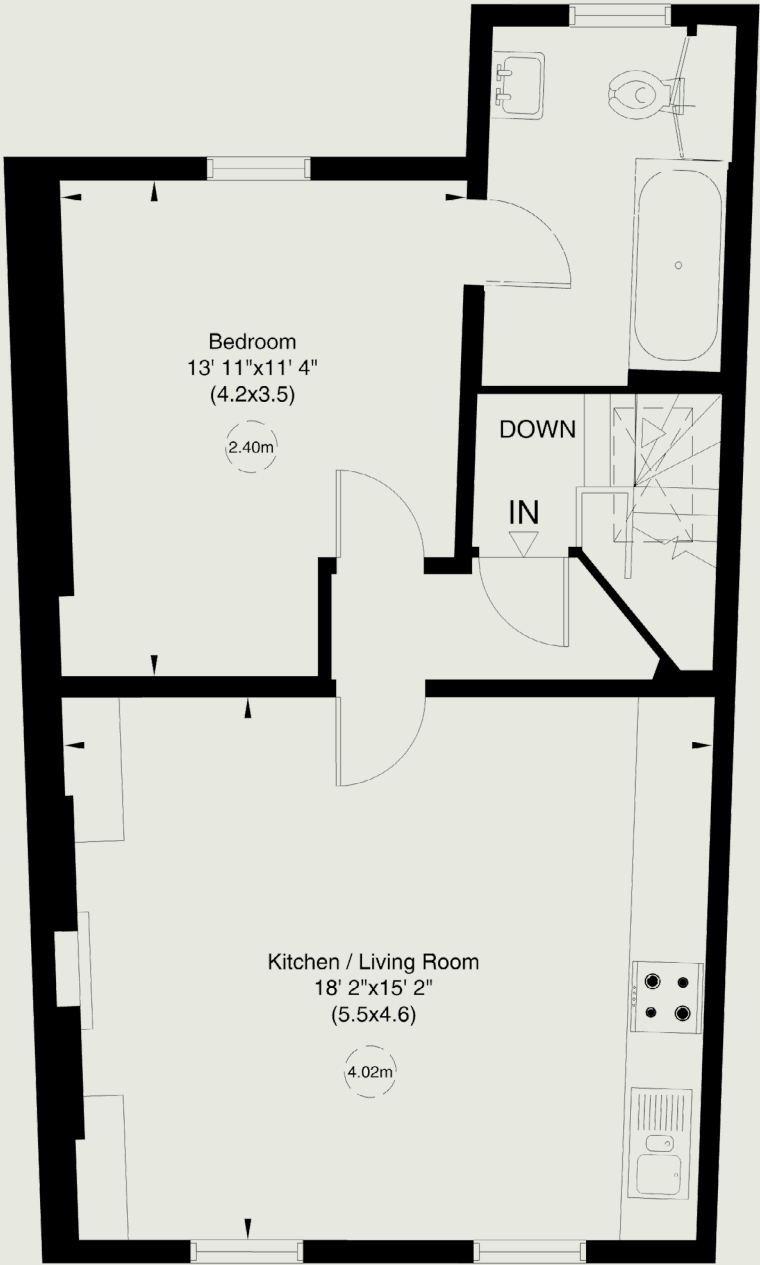








Gross internal area (approx.)
48 Sq m (518 Sq ft)
For identification only, Not to Scale



Third Floor

Not to scale, for guidance only and must not be relied upon as a statement of fact. All measurements and areas are approximate only (and have been prepared in accordance with the current edition of the RICS Code of Measuring Practice).

PEREDS

INDEPENDENT
PROPERTY CONSULTANTS
SINCE 1967

PORTLAND HOUSE PORTLAND ROAD HOLLAND PARK LONDON W11 4LA
TELEPHONE 020 7221 1404 PEREDS.COM