



5 Fairfax Road

BEDFORD PARK W4



A beautifully positioned semi-detached Grade II listed house with off-street parking, built in the Norman Shaw style within the Bedford Park conservation area.

A very well presented wide four/six bedroom three-storey house, which in recent years has been extended and refurbished by the current owners.

In a very quiet residential tree-lined road close to the junction with Addison Grove allowing for long green outlooks both back and front.

Reception room

Dining room

Kitchen/breakfast room

Utility room

Sauna

WC

Office/snug/bedroom with balcony

Principal bedroom

Dressing room

Bathroom

Separate WC

3 Further bedrooms

Family bathroom

Large west-facing rear garden

Off-street parking behind gates

Freehold offered for sale

London Borough of Hounslow





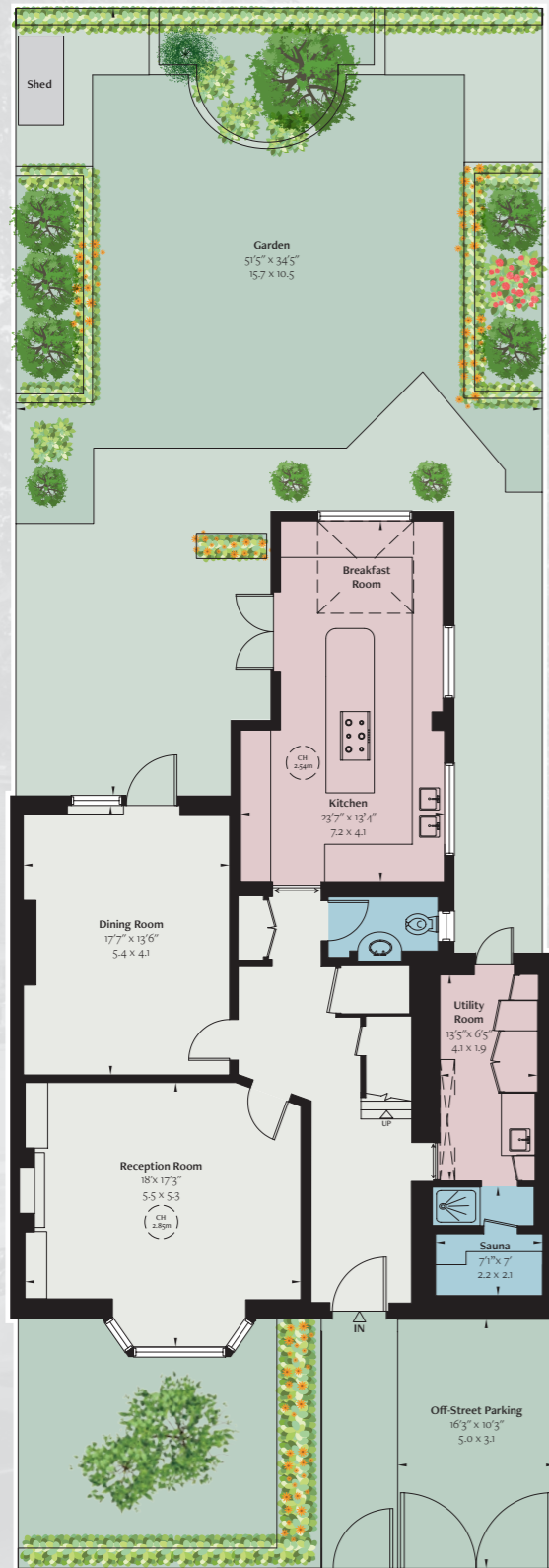






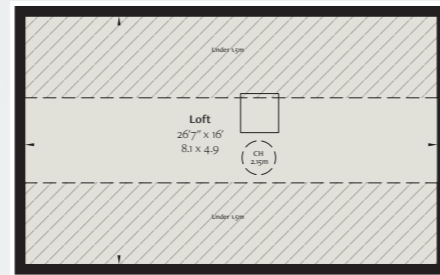






Ground Floor

Approximate Gross Internal Area
 2,849 sq ft / 265 sq m
 excluding under eaves, under 1.5m and loft



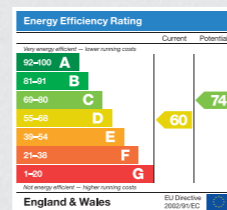
Loft



Second Floor



First Floor



IMPORTANT NOTICE Please be aware that descriptions of property are inevitably subjective. Those given here are intended to be fair and accurate, but they are prepared for guidance only and do not form part of any offer or contract. No responsibility is taken for errors, omissions or mis-statements. Plans are for guidance only and must not be relied upon as statements of fact. Areas, measurements or distances referred to are approximate only. It should not be assumed that items shown in photographs will remain at the property. Pereds make no representations nor give any warranty whatever either during negotiations, in particular, or elsewhere.



PEREDS

INDEPENDENT
PROPERTY CONSULTANTS

020 7221 1404

PORTLAND HOUSE, PORTLAND ROAD
HOLLAND PARK, LONDON W11 4LA
PEREDS.COM